



The Eyes that Bewitch





This project is an attempt to design a product range of jewellery inspired by Mysterious Blue Lava of Kawah Ijen Volcano and the Eyes of the Gorgon and further develop the final prototype of the designed range.

Both fierce yet irresistible. London Blue Topaz (Polki Gemstones) engulfed in clean flowing liquid metal blend in perfect union creating a masterpiece... A collection ensnaring you like the Eyes of Medusa yet has a sense of fluidity like the flow of Lava, dynamic... unrelenting.



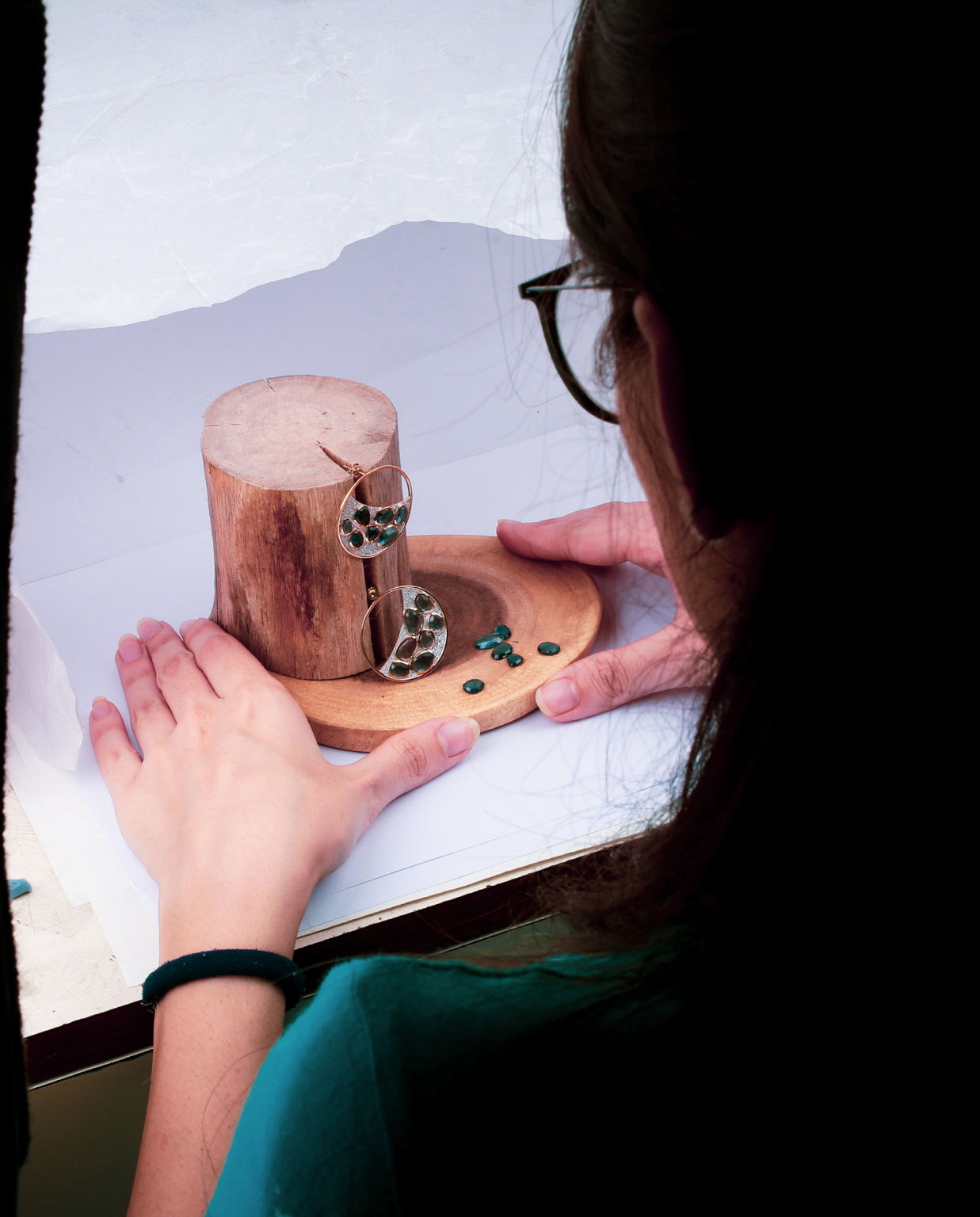






I've played with gold and twisted it with a clean, technological and dynamic aspect in order to translate my idea of blue lava into a metal case of gold.

Inspired to create a range of gold and LBT gemstone jewellery which is not only luxurious but also very sturdy and light in weight.





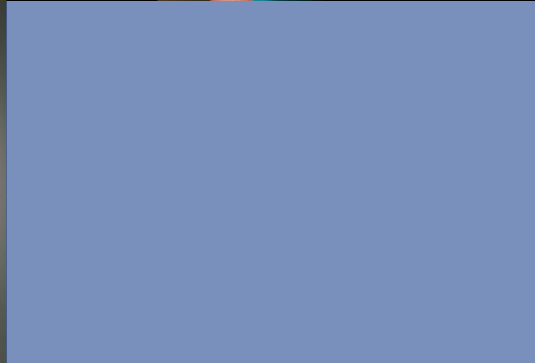


The main objective of this project was to make pieces which can retain the gemstones easily and have a proper bezel setting as the thickness of the polki is very less and make the piece look delicate along with an interesting mechanism. A metal which is light in weight as well as looks elegant . The designs of this collection started on paper, followed by the design process.

The complete collection!







Special thanks to Avnis Das

A collection where delicacy meets class !



ADITI BHANDARI